

**ALLDAY
& MILLER**



Long Drive, Ruislip, HA4 0JD
£350,000

 2  1  1  c



Long Drive, Ruislip, HA4 0JD

£350,000

- Split Level Apartment
- 131 Year Lease
- Residents Parking / Garage
- Close To Local Amenities
- Loft with Large Well-Lit Storage Area
- Two Double Bedrooms
- Good Condition Throughout
- Low Running Costs
- Walking Distance To South Ruislip Station
- Catchment Area for Highly Rated Schools

Description

This stylish and well-presented home offers bright and modern living, making it an ideal choice for first-time buyers.

The first floor comprises a spacious reception/dining room, perfect for both relaxing and entertaining, alongside a well-fitted modern kitchen.

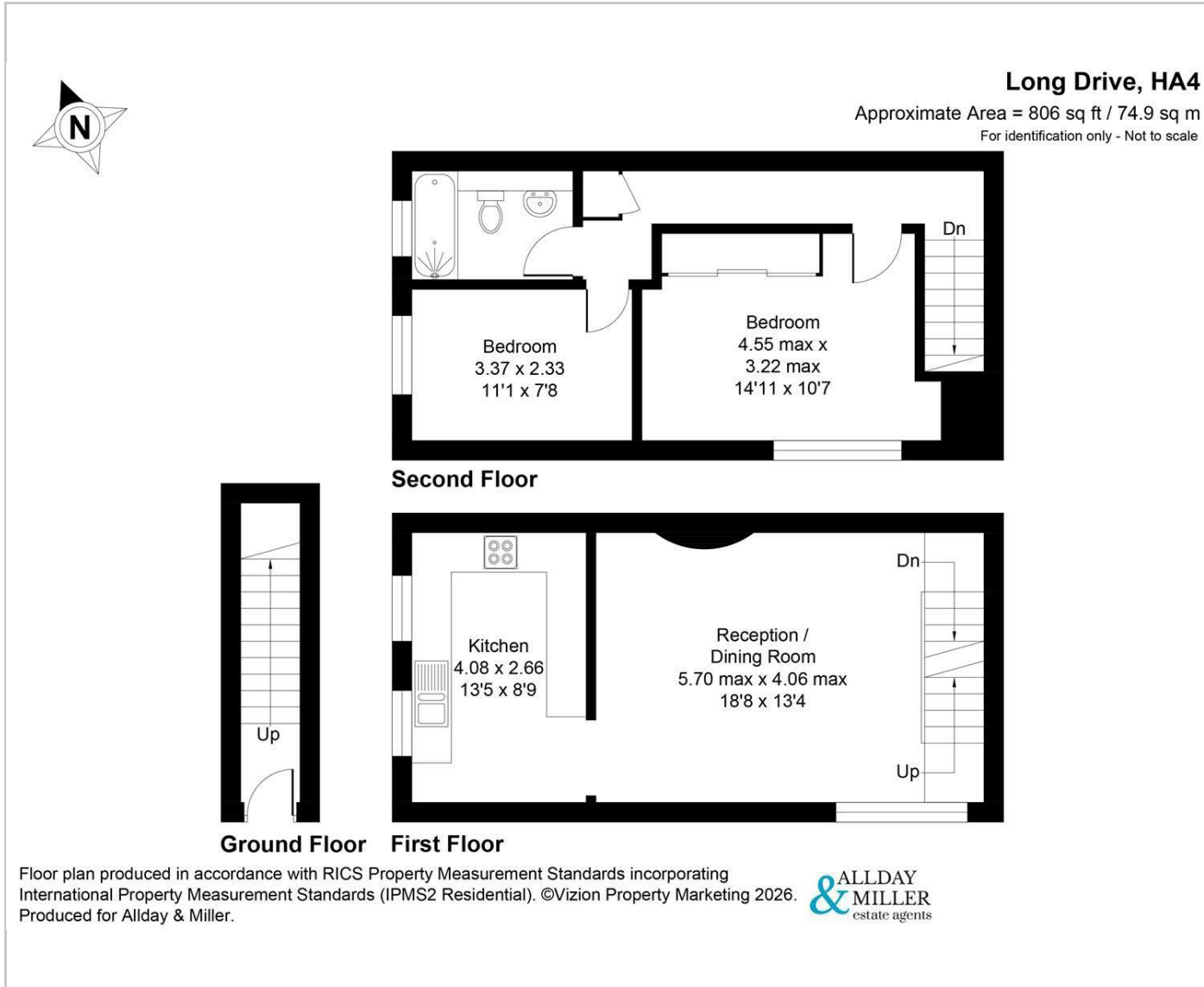
To the second floor, the property features two well-proportioned bedrooms and a bathroom.

Situation

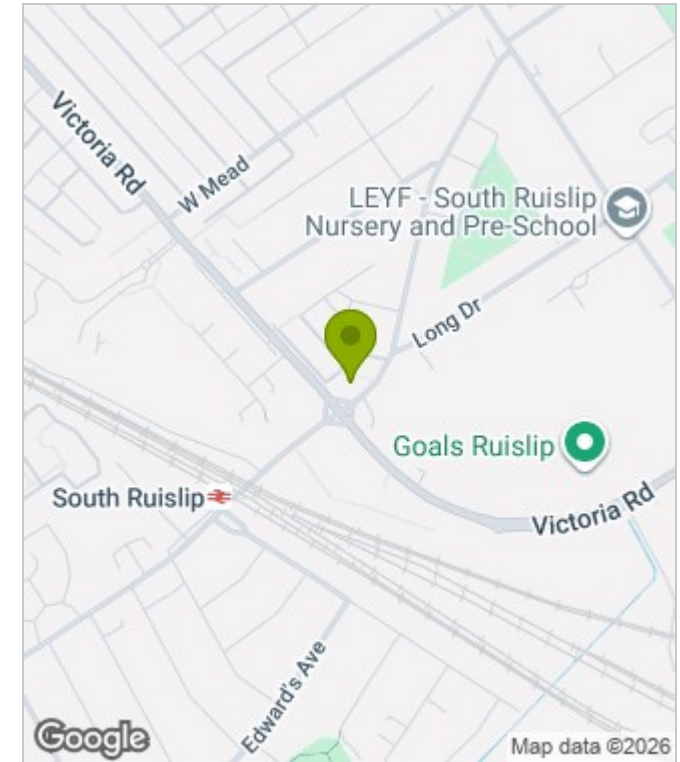
Long Drive, Ruislip is a well-located residential address offering excellent connectivity and access to a wide range of local amenities. The closest station is South Ruislip Station, situated just a short walk away (approximately 300–600 yards), providing Central Line and Chiltern Railways services for convenient routes into Central London and beyond. A variety of everyday amenities are available nearby, including shops, supermarkets and food outlets within Ruislip, while a broader selection can be found at Ruislip High Street, offering cafés, restaurants and retail options. The area is served by several well-regarded schools, including Queensmead School and Deanesfield Primary School, along with additional primary and secondary schools nearby. Further benefits include access to open green spaces such as Northala Fields and Ruislip Lido, offering outdoor leisure facilities, walking routes and scenic surroundings.



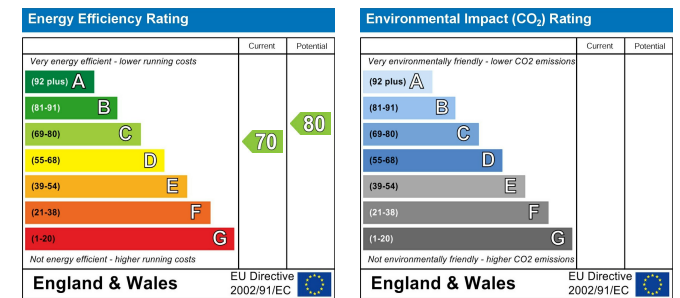
Floor Plans



Area Map



Energy Performance Graph



These particulars, whilst believed to be accurate are set out as a general outline only for guidance and do not constitute any part of an offer or contract. Intending purchasers should not rely on them as statements of representation of fact, but must satisfy themselves by inspection or otherwise as to their accuracy. No person in this firm's employment has the authority to make or give any representation or warranty in respect of the property.